

FASTENING & ASSEMBLY SOLUTIONS FOR LIGHTING INDUSTRY

Increase your design possibilities & boost your manufacturing productivity!

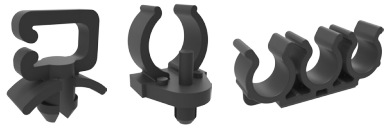
Grounding Clips.....



Spring Rings, Grommets, Caps.....



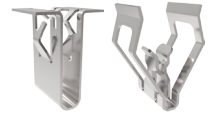
Plastic Cable Clips.....



Plastic Panel Pins.....



Trim Clips.....



Shaft Retainers.....



Specific Metal Panel Clips.....



ARaymond **Industrial** currently provides to the lighting market different product lines such as:



PLASTIC PANEL PINS

Plastic push pins for **replacement of** traditional solutions such as **screws or rivets**. Depending the design fits in a panel hole or in a blind hole. **Aesthetic solution** thanks to small head to be unnoticeable and some solutions with **removable function**.



GROUNDING CLIPS

Technical solutions with high added value, **allow the connection of metallic elements to the ground without need of holes, welded studs, toothed and threaded washers**.



SPRING RINGS, GROMMETS & CAPS

Families whose main function is the **protection and finishing of the end products**. **Spring Rings protect the through holes in plastic parts** where a screw passes across, and produces the creep effect (damaging the plastic with the friction of the thread).

Grommets protect the wiring passing through a metal sheet hole, avoiding the damage and even cutting the cable. **Caps protect from dust and embellish** an unused hole of the product.



SHAFT RETAINERS

Easily applied, they provide several advantages over the traditional hex-shaped cold-headed nuts, by **eliminating need for a washer and lock-washer and reducing material and investment costs**. Shaft Retainers require less torque, and the self-threading option **eliminates the need for a threaded rod or screw and can be assembled directly to injection molded parts**.



PLASTIC CABLE CLIPS

These parts are **simple to install and provide a reliable retention**. The product family is wide and **can be assembled in different environments** like in a hole, on a panel edge, on a stud, to cables/tubes and on flat surfaces.



TRIM CLIPS

Hidden solution installed in seconds, eliminate mechanical fastener from view, **improving the aesthetics of the end product**.



SPECIFIC METAL PANEL CLIPS

ARaymond Industrial provides to the lighting market specific Clips to install and fix the luminaire to the ceiling, fast assembly solutions to trunking systems or to fix the louvers to the luminaire metal sheet body, for instance.